

# THE GREEN QUARTER

WEST LONDON



# COMMUNITY SOCIAL IMPACT REPORT



# WELCOME TO THE GREEN QUARTER

**At The Green Quarter in Southall, Berkeley is transforming an 88-acre former gasworks site into a nature-rich, community-led neighbourhood.**

As one of the UK's largest and most ambitious regeneration projects, we are delivering much-needed modern homes and infrastructure while providing the catalyst for wider local rejuvenation and economic growth. Today, The Green Quarter is fast emerging as a vibrant new hub for our growing community of residents and the wider Southall neighbourhood.

2026 marks a significant milestone. It is ten years since the updated masterplan for The Green Quarter was approved and work began to bring this special new place to life, laying the foundations for long-term transformation.

Over the past decade, we have worked closely with neighbours, stakeholders and local representatives to ensure that The Green Quarter evolves in a way that is genuinely shaped by its community. New residents and, crucially, the people of Southall, have played an important role in influencing our direction. Our bespoke community plan reflects the needs and aspirations of local people, organisations and businesses.

Our third impact report celebrates the dedication and achievements of our team and partners in fostering a welcoming and inclusive neighbourhood. Above all, it demonstrates our ongoing commitment to making a meaningful, positive difference year after year.

# ABOUT BERKELEY

**Berkeley is a premium residential developer and one of the only large UK homebuilders prioritising brownfield development.**

We deliver high quality, sustainable urban regeneration in London and in line with our overarching vision, our developments transform neglected and underused land in and around the capital, reviving the landscape and establishing thriving new communities.

In Our Vision 2030, Berkeley set out its commitment to responsible business strategy and its goal to maximise our positive impact on society.

Our vision is to be a world-class business, trusted to transform the most challenging sites into exceptional places and our purpose is to build high quality-homes, strengthen communities and improve people's lives.

We continue to be guided by Our Vision's ten integrated priorities, which are built upon leading climate action, nature recovery and social value programmes.





# A MESSAGE FROM JAGS SANGHERA HEAD OF BUSINESS AND COMMUNITY ENGAGEMENT

“At The Green Quarter, we take immense pride in the place we are creating and remain deeply committed to ensuring that this is shared by everyone who lives, works and spends time here.

Our ambition extends beyond delivering high-quality homes; we are focused on nurturing a thriving, inclusive neighbourhood where people feel a genuine sense of belonging and connection.

This year marks an exciting new chapter as we progress into Phase 2, bringing forward new homes, amenities and opportunities that will continue to shape the character and vibrancy of the community.

Alongside this growth, we have seen a number of meaningful milestones that reflect how The Green Quarter is evolving day by day. The addition of roofing to the padel courts has made the sport more accessible throughout the year, while the arrival of Clean Slate dry cleaners adds to the convenience and everyday offer for residents.

Our community hub, Parkside Yards, has also gone from strength to strength, hosting an increasing number of events that bring people together and activate the space in new and engaging ways.

Each of these developments represents an important step in enhancing the local area, creating new experiences, supporting local enterprise and contributing to a lively, welcoming environment for all.

This year, I was delighted to achieve peer recognition with award wins at the West London Business Awards and West London Chamber of Commerce for social impact and green business initiatives.

We also welcomed visitors from Saudi and Japan, looking to understand more about community engagement at The Green Quarter.

Looking ahead, we remain focused on building on this momentum. We will continue to deliver much-needed homes, ensuring more people can benefit from high-quality living spaces, while expanding our programme of events and activities to encourage greater community participation.

Our long-term vision is clear: to foster a dynamic, connected and inclusive neighbourhood where people can come together, feel supported and play an active role in shaping its future.”

# OUR COMMITMENT TO SOCIAL IMPACT

As we continue to shape a place that is not only sustainable in its design but meaningful in its contribution to people's lives, we recognise that long-term success is defined by more than the homes and infrastructure we deliver.

Based on local needs, assessed via a community survey and statistics, we have a community plan in place with the following priorities; Creating Opportunities, Improving Sense of Belonging and Safety, and Promoting a Healthy Lifestyle.

The community plan provides a structured approach to developing programmes and events for Southall, which follows the Berkeley Group Communities framework.

It is measured by the opportunities we create, the relationships we build and the positive, lasting difference we make within the local community.

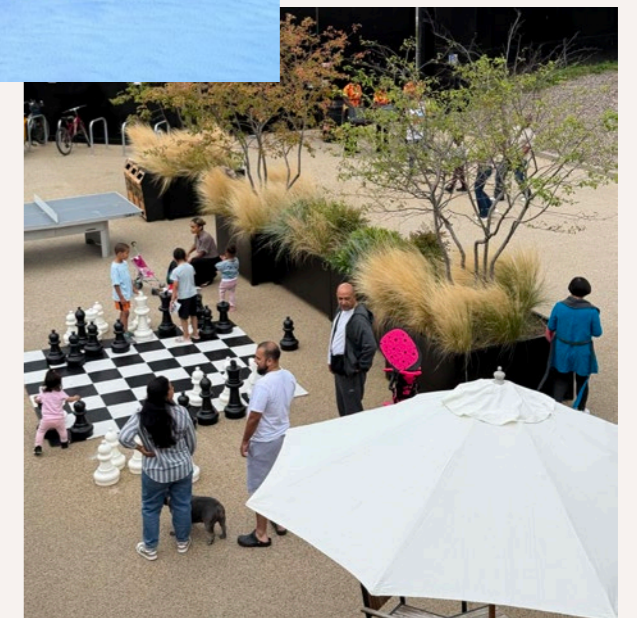
This report sets out our approach and progress across a range of key areas, including employment and the growth of a strong local workforce, education and skills development, and meaningful community engagement.

It also highlights our commitment to community investment, charity partnerships and collaborative working, alongside our focus on wellbeing and fostering a positive site culture.

Through case studies, we bring these efforts to life, demonstrating real stories and outcomes, before looking ahead to how we will continue to build on these foundations in the years to come.



**SOCIAL IMPACT  
SITS AT THE HEART  
OF OUR VISION  
FOR THE GREEN  
QUARTER**



# OUR IMPACT 2025-26

5,166  
PEOPLE  
REACHED

9 WORK  
EXPERIENCE  
PLACEMENTS

Including two care leavers

4 INSIGHT  
DAYS

Giving insight into careers at  
Berkeley and in construction

2 DAYS FOR  
OPEN DOORS  
EVENT

1 PARKSIDE  
YARDS OPEN  
DAY

3 SCHOOLS'  
DAYS OUT

4 SITE TOURS FOR  
WEST LONDON  
COLLEGE

Hosting over 100 students



2 CAREERS  
FAIRS

Hosted at Parkside Yards

57 TOTAL  
EVENTS

2 SCHOOL  
ENGAGEMENTS

2016 The Masterplan is approved

2021 Commence new phase

2025 Revised masterplan approved by Ealing Council

2026 Ealing Council Affordable Homes Agreement signed

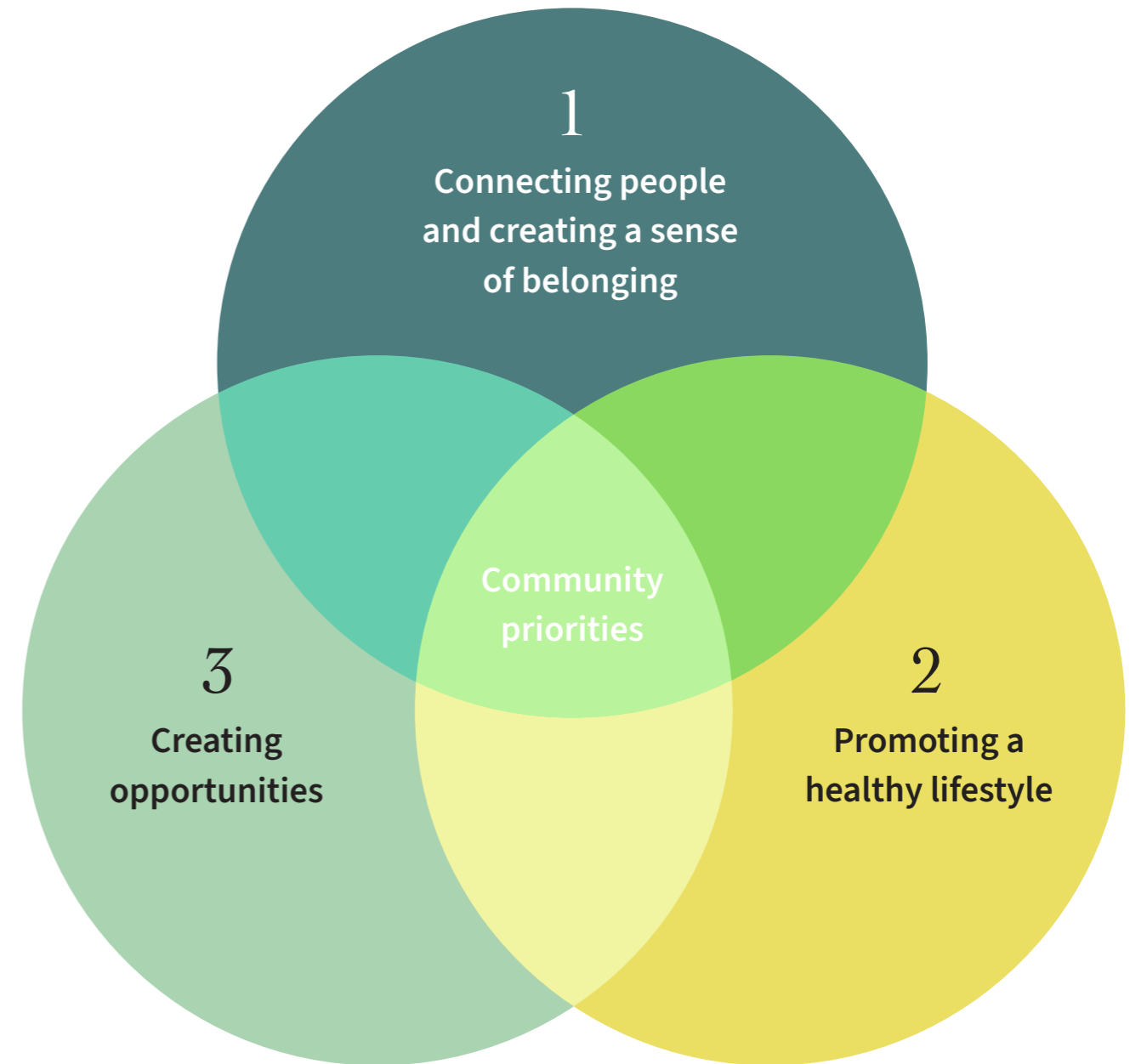
2026 Next phase works commence

# HIGHLIGHTS AT A GLANCE





# OUR COMMUNITY PRIORITIES





# COMMUNITY ENGAGEMENT CREATING A SENSE OF BELONGING

**We are committed to creating meaningful connections between residents and the wider community.**

We believe that when people feel valued and supported, communities flourish. We are delivering a positive, welcoming environment that truly feels like home, not only for residents but for our visitors too.

From the outset, we have prioritised inclusive engagement and collaboration and a decade later, our relationships with local residents, stakeholders and community representatives are central to The Green Quarter's identity.

Regular events, meetings and initiatives continue to bring our residents and Southall together, helping to shape the future of the development and strengthen community bonds.



# LIVING AT THE GREEN QUARTER

The Green Quarter is home to over 2,500 residents, who enjoy the wide-ranging facilities, parks and events. In 2025, our Net Promoter Score was 92.3% and our 'recommend a friend' score was 98.4%.

## HERE'S WHAT OUR RESIDENTS HAVE TO SAY

"It's not just the quality of the apartments and houses, but the entire development. The parks, green spaces, water features and upcoming facilities make it feel complete."

"The environment is great. The development is next to a large park, this is good for me as I like hiking and nature."

"This area is beautiful and there are a lot of plants. It is very green and located near to the train station."

"We like the location and the area of the development. We have all the facilities that we need in one place."

"The location is excellent with the Elizabeth Line nearby, and everyone from the concierge to the café staff goes the extra mile."

"The community engagement is on another level, with something for everyone, from young children to older residents."

# STATE OF LIFE INDEPENDENT REVIEW

In 2025, we commissioned State of Life to conduct an independent review of quality of life at The Green Quarter.

State of Life helps organisations to assess and measure the social and economic value of their activity or project.

They use mixed methodologies based around national open datasets, primary data, economic analysis, and digital technology to credibly evidence social and economic value.

The Green Quarter residents experience **greater life** satisfaction and happiness than non-residents.



**INCREDIBLE SOCIAL VALUE**  
WELLBY valuation indicates a social value of **£14,200** per resident per year



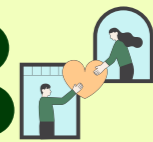
## THE POWER OF GREEN SPACES - THE TREE NURSERY AND NATURE TRAIL



Feeling life is more worthwhile

Increased pride in the area

More neighbourly chats



## PARKSIDE YARDS VISITORS REPORT:



Feeling happier



Feeling safer



Exercising more



The Green Quarter residents are more satisfied with their current home than where they previously lived.

# THE NEIGHBOURHOOD FORUM

Established in 2023, the Neighbourhood Forum brings together a diverse mix of homeowners and housing association representatives.

This forum plays a vital role in shaping community governance and provides residents with a platform to contribute directly to decision making processes and influence the direction of their neighbourhood.





# COMMUNITY ENGAGEMENT STEERING GROUP

**Complementing this, the Community Engagement Steering Group comprises local stakeholders from a wide range of backgrounds.**

Meeting quarterly, the group ensures broad representation, identifies areas for improvement and evaluates the development's impact on surrounding communities.

The group brings valuable input on projects that deepen the relationship with the local community and ensure the voices of those living in Southall make an impact.

In addition to guiding community engagement, the Steering Group oversees the management of our Community Chest programme, offering financial grants to fund improvements in and around the development area.

The diverse membership of the Steering Group includes residents of The Green Quarter, Ealing Council, faith leaders, the University of West London, West London College, local Primary and Secondary Schools, the Ealing Cycling Group, the Friends of Grand Union Canal, the Southall Community Alliance, the Metropolitan Police, LAGER CAN(local litter action group) and The Green Quarter's Community Engagement Team.

Notable impacts

**6 MEETINGS  
ACROSS 2025/6**

**LAUNCHING  
THE £25,000  
COMMUNITY  
CHEST FUND**

# THE SOUTHALL COMMUNITY ALLIANCE

The Green Quarter also maintains a close and ongoing partnership with the Southall Community Alliance (SCA), an organisation dedicated to supporting and empowering the local community.

Through this collaboration, residents and organisations work together to address key issues affecting the area's wellbeing and long-term development.

By working closely with the SCA, The Green Quarter responds to the evolving needs of Southall, with a strong focus on inclusion, social responsibility and environmental sustainability.

**12 MEETINGS  
ACROSS 2025/6**



## Notable impacts

### **SOUTHALL CONNECT**

Aims to tackle isolation and increase health & wellbeing of residents.

### **YOUNG VOICES**

Aims to engage young people each year in exploring the rich local history of Southall.

### **CARETAKERS COTTAGE**

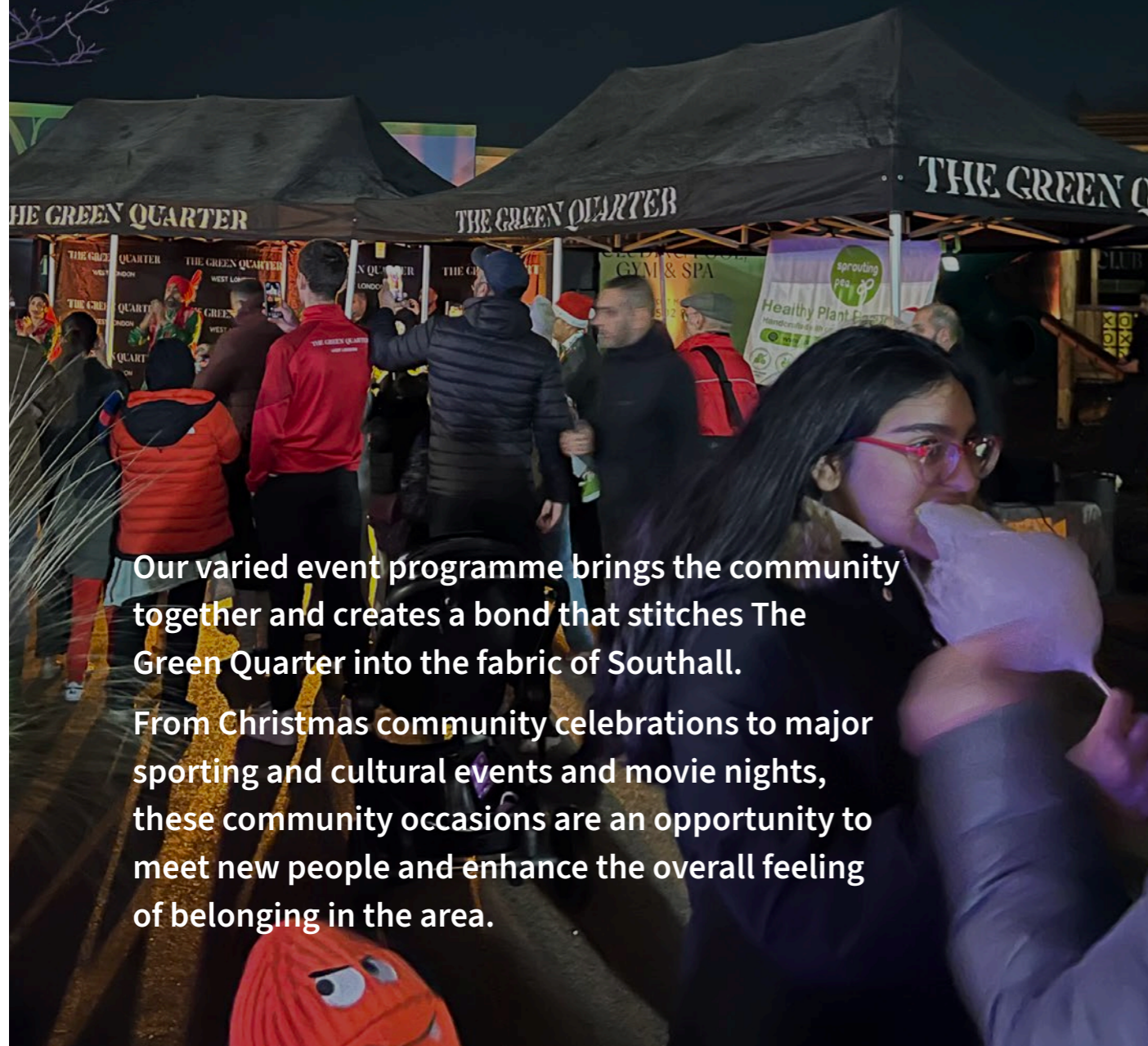
Addresses the pressing need for mental health support among children.

### **PLANT TO PLATE**

Engages women in growing food and healthy cooking practices.

# COMMUNITY EVENTS

57 EVENTS ACROSS 2025/6      5,166 PEOPLE REACHED



**Our varied event programme brings the community together and creates a bond that stitches The Green Quarter into the fabric of Southall.**

**From Christmas community celebrations to major sporting and cultural events and movie nights, these community occasions are an opportunity to meet new people and enhance the overall feeling of belonging in the area.**



## SUMMER IN SOUTHALL

**Our Summer in Southall community event was a major highlight.**

This year we have brought the community together for a summer celebration, over 350 people attended to enjoy music, workshops, arts and crafts, poetry and more.

With contributions from over 16 organisations within Southall, the carnival themed event took place in August 2025, with a special visit from MP for Ealing Southall Deidre Costigan who visited all the stalls and spoke with residents, highlighting The Green Quarter's positive impact in the local community.



# STREET ELITE FESTIVAL

**The annual Street Elite Festival on the 26th June marked the 5th year of The Green Quarter hosting this celebration of young people who have completed their nine-month coaching and mentoring programme.**

The event was a day-long festival showcasing various sports, including football, boxing, and yoga for young people. 2025 marked a renewed 5-year partnership (2025-2029) between The Berkeley Foundation and The Change Foundation to help support youth education, employment and training.

We are proud to host this festival and of our commitment to bring the community together to build something positive for the young people of Ealing and Southall.

# DIWALI

**Diwali in Southall, in partnership with IKBEventWorks, was hosted at The Green Quarter's Parkside Yards.**

The vibrant celebrations featured festive shopping, food, music and shared community joy, with over 450 guests in attendance.

# 12 DAYS OF CHRISTMAS

**2025 marked The Green Quarter's most elaborate community celebration for Christmas yet.**

We embraced the Christmas spirit with twelve days of community warmth and holiday cheer, with residents and visitors enjoying a vibrant programme of workshops, celebrations, markets and family-friendly activities.

A major highlight of the programme was the Christmas Party on 4th December. This family-friendly celebration brought The Green Quarter and Parkside Yards to life with a full evening of festivities. Visitors met animals from the Basil and Crew Petting Farm, including Basil the donkey, enjoyed performances by the Ealing Rock Choir, explored festive stalls and soaked up the atmosphere with mulled wine and mince pies. Santa and his elf also made a special appearance to spread Christmas cheer.

The full line up across the twelve days included school performances, wreath-making, candle workshops, a buzzing Christmas market and even a live orchestral movie night. It was the perfect way to embrace the joy of the season with memories made with neighbours, friends and family.

Overall, the Christmas celebrations attracted more than 500 visitors across the 12 days, and with 16 local businesses supported.



# COMMUNITY INVESTMENT & SUPPORT

**2025/26 marked the second launch of The Green Quarter Community Chest, a grant-making initiative from Berkeley to support local community organisations, social enterprises and charities delivering positive impact in Southall.**

£25,000 is made available over a 12-month period to projects that align with the Community Chest's priority areas. These include improving skills, training and employment opportunities, celebrating and protecting culture and heritage, supporting health and wellbeing, promoting sustainability; and enhancing the local environment.

The first grants of 2025/26 were awarded in late 2025. Hope for Southall Street Homeless (HSSH), a local charity providing emergency support to rough sleepers in Southall, will use the funding of £5,000 to help cover running costs and staff salaries.

Meanwhile, Ultra Education CIC, which delivers entrepreneurial education to young people, particularly those from disadvantaged backgrounds, used the grant of £7,000 to support its 12-week programme, hosted at The Green Quarter's Parkside Yards.

Participants can present their products and services. We have seen young people who have taken part in our workshops and programmes go on to do incredible things, and bringing this opportunity to Southall for the first time is exciting.



**JOHN MURPHEY  
GENERAL SECRETARY AT  
HOPE FOR SOUTHALL  
STREET HOMELESS**

**“This funding will support our first Southall based 12-week entrepreneurship and education programme in partnership with OPEN Southall, based at Parkside Yards at The Green Quarter.**

**“The programme will culminate in a market showcase where participants can present their products and services. We have seen young people who have taken part in our workshops and programmes go on to do incredible things, and bringing this opportunity to Southall for the first time is exciting. We are proud to be able to support the local area in this way.”**

**JULIAN HALL  
FOUNDER**



# PROMOTING A HEALTHY LIFESTYLE

**With nature at its heart, we've invested in social infrastructure and partnerships to promote a healthy lifestyle for the community to address health disparities.**

From the padel courts, to regular programmes such as Park-Play, the development has become a popular destination for health and wellbeing activities.

The Green Quarter has taken an entirely holistic approach to ensuring the development has community value built in, from physical space to how it engages with the local community, bringing not only new residents but the existing community into consideration.



# PARKSIDE YARDS

Our thriving community hub Parkside Yards, operated by our partners OPEN Southall, is a new hub for local businesses and a multi-purpose space for community use. They offer a range of health and wellbeing programmes from yoga to meditation.



# CENTRAL GARDENS

Central Gardens, one of our impressive green spaces, promotes biodiversity and offers pathways, play areas and even an amphitheatre. This is a vibrant space that the community enjoys, both residents and wider Southall alike.

# PARKSIDE PADEL CLUB

Padel is the world's fastest growing sport and is a great way to exercise, socialise and have fun, whilst enhancing overall health and wellbeing.



The Parkside Padel facilities were also enhanced with the installation of new roofing, enabling year-round access.

The courts continue to operate at near capacity and attract a diverse mix of users from both the local community and further afield, reinforcing The Green Quarter's role in bringing people together and positioning Southall as a destination for sport and leisure.

Over the last year, over 4,000 people have enjoyed the facility, which is used by local community groups including Let's Go Southall.



# SOUTHALL FOOTBALL CLUB

**Following its partnership from the 2023/24 season, we are proud to continue our support for grassroots sport as the principal kit sponsor of Southall FC.**

This partnership extends beyond sponsorship, with Southall FC hosting exhibitions and community events at Parkside Yards.

These activities strengthen local engagement, promote wellbeing through sport, and create opportunities for residents to connect.

In March 2026, Southall FC won the John Taylor Senior Challenge Cup.



# OPEN SOUTHALL

**800**  
**ATTENDEES**

at Beat Festival

**20**  
**ATTENDEES**

at Young Entrepreneur Programme

**8 LOCAL**  
**ARTISTS**

supported

**50 YOUNG**  
**PEOPLE**

supported with Duke of Edinburgh award

**18 STUDENT**  
**VOLUNTEERS**

from local school

**60 CHESS**  
**COMPETITIONS**

at Weekend Club

## The last 12 months have been a period for both consolidation and developing collaborations.

- We maintained a strong exhibition programme aimed at supporting local artists to show and sell their work. For the third year running Parkside Yards was a BEAT venue with 11 artists taking part in the Borough's annual art trail. It was also the third year of hosting Balvinder Chana's art group's annual exhibition. Both events proved popular, attracting nearly 800 visitors between them.
- Eight painters exhibited their work in the cafe during the last 12 months. This year their exposure not only led to sales and commissions but also to new creative workshops like Sip and Paint and Mindful Mandalas.
- Several exciting collaborations occurred; the most exciting was with Director Gurinder Chada who was in the UK for the world premiere of her film Christmas Karma. She visited the Brilliant Gastro who were doing the tiffin boxes for the premiere. During her visit she learned about our work with local schools and offered to return to launch the festive period. For the occasion pupils from Blair Peach school learned one of the songs from the film; Last Christmas (Desi Style). They performed it for Gurinder and guests at Parkside Yards, supported by fellow students who treated us to some traditional Indian dancing.
- OPEN Southall celebrated Diwali by supporting IKB Events who organised a themed market and entertainment. Our Diwali Prep & Glow workshops included Indian block printing, card making, creating ceramic diyas, sari draping with the wonderful Niddi Uppal and henna.
- The collaboration with The Sher Jung Foundation continued with six Meet the Author events. These sparked another collaboration with Blair Peach primary school - Story Time for pre schoolers. The sessions were open to all children aged between 2 and a half and 5 years old and were free to attend.
- Ultra Education held its first Young Entrepreneur Programme in Ealing at The Green Quarter. 20 young entrepreneurs aged between 9 and 15 started the 12 week course which culminated in a pop up market on 2nd May. The participants designed and developed a range of products and services and had the chance to offer them at the pop up market.

# OPEN SOUTHALL COMMUNITY INITIATIVES

- Weekend chess competitions take place every month, averaging 60 competitors.
- Regular yoga sessions have expanded to a family session delivered by Kids Yoga Flo. We are expanding the yoga programme with the aim of offering at least one class a day at Parkside Yards where we host local practitioners delivering a variety of sessions.
- An appeal for volunteers led to a collaboration with Featherstone High School. 18 students came forward to volunteer with events, the library and establishing an arts and craft after school club.
- Supporting young people interested in the arts remains at the heart of OPEN's vision, and we're pleased to have offered opportunities to students doing their Duke of Edinburgh Awards, work experience and portfolio building. Over the last 12 months we have worked with over 50 young people.
- In our first year we received many suggestions and requests by the community to run new classes like sewing traditional Indian women's wear, introducing physical health and wellbeing sessions and expanding the events to include other festivals like Diwali. We have actioned every request and suggestion and most have become a sustainable activity in the OPEN Southall and Parkside Yards creative programme.



# FEATHERSTONE HIGH SCHOOL GARDEN OPENING

**In October 2025, Featherstone High School officially opened its new school garden and outdoor classroom, supported by Berkeley.**

The garden provides a sustainable, hands-on learning environment where students can engage with nature and environmental education.

The project was delivered with contributions of both materials and labour, demonstrating a strong commitment to local education and community wellbeing.

The opening event was attended by representatives from Berkeley and The Green Quarter, alongside the Mayor of Ealing and MP Deirdre Costigan.



## PARK-PLAY

Park-Play is about bringing people together through active and inclusive games that helps engage people of all ages. This is our second year of partnership to deliver free community play events.

## EALING CLIMATE SUMMIT PARKSIDE YARDS

In September, we collaborated with Ealing borough's climate leaders and nature advocates to deliver a flagship event for Ealing Climate Week.

This included presentations, stalls and workshops from the community, business and education.

# CREATING OPPORTUNITIES: EMPLOYMENT & LOCAL WORKFORCE



**The Green Quarter has a long-term structured programme of local school outreach, work experience placements, graduates, apprenticeships, and careers events.**

Employment and skills development are central to our commitment to delivering long-term social value at The Green Quarter.

As the development continues to grow, so too does our focus on creating meaningful job opportunities for local people and supporting a strong, resilient workforce.

By working closely with our commercial tenants, contractor and trade partners, we aim to ensure that local residents are able to access employment pathways linked to the development, helping to retain skills within the area and contribute to the wider local economy.

From early careers through to experienced roles, we are committed to promoting inclusive access to opportunities and supporting individuals to build sustainable, rewarding careers.

Graduates and apprenticeships play a vital role in achieving this ambition. They provide a practical and accessible route into the construction industry, equipping individuals with hands-on experience, technical skills and the confidence to progress in their chosen field.

At The Green Quarter, we are proud to have supported a number of apprentices across our team and different trades, helping to nurture the next generation of talent. These opportunities not only

benefit the individuals involved but also strengthen our workforce and supply chain for the future. This year, we are pleased to highlight the journey of one of our apprentice bricklayers, a local resident who is now working with one of our trusted supply chain partners.

His story is a powerful example of how apprenticeships can create lasting impact, opening doors to long-term employment while reinforcing our commitment to supporting the local community.

In the last financial year, we hosted 7 apprentices/graduates in our workforce and a further 14 with our supply chain. Over 12% of the workforce is from Ealing and 34% from surrounding boroughs.

In collaboration with a range of stakeholders, we are committed to supporting disadvantaged individuals into work.

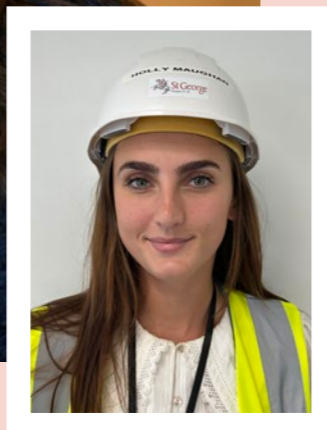
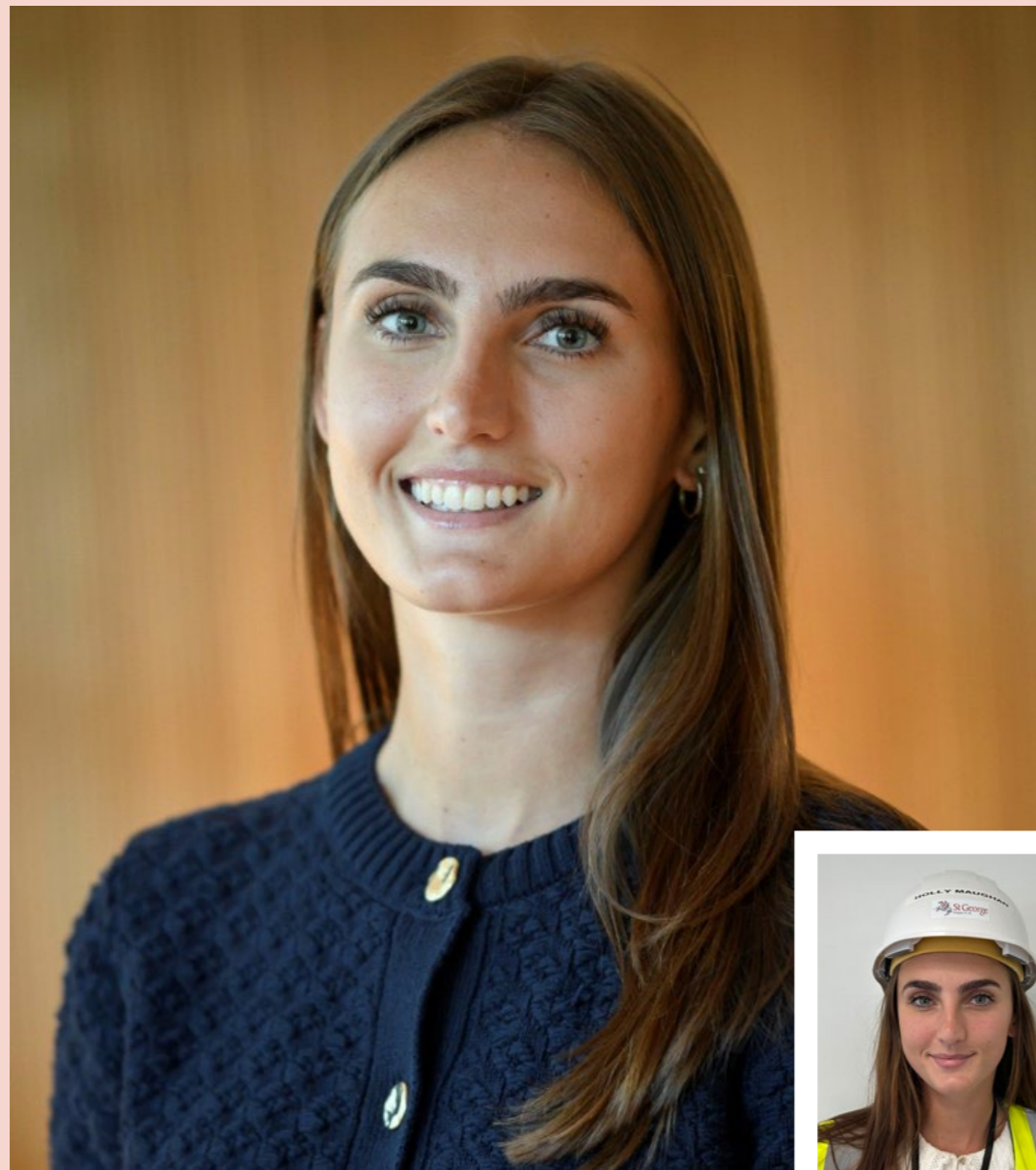
We are proud members of Movement to Work, a national charity that connects young people with employment opportunities across sectors.

In addition, we are founding members of the Crisis Homelessness Alliance and signatories of the Care Leavers Covenant.

This year, two of our work experience placements have been dedicated to care leavers, reinforcing our commitment to inclusive access to opportunity.

# HOLLY MAUGHAN CONSTRUCTION GRADUATE

JOINED  
SEPTEMBER 2025



## **Can you tell us a bit about your background and what led you to apply for this apprenticeship/graduate role?**

I have a master's degree in civil engineering and project management at the University of Leeds. I decided to go down the construction route instead of technical because I love to see the progress first hand and be in a people focused role

I saw that Berkeley offered a graduate programme that allowed me to spend time in different departments which I thought would be fantastic for my understanding of the industry and business.

## **What opportunities has this programme opened up for you that you might not have had otherwise?**

Meeting other graduates in different divisions has been great and growing my network by spending time on other sites and in other departments during rotations. I have also been given a good level of responsibility on site which has helped me learn on the job quickly.

## **What skills or experiences have you gained so far that you're most proud of?**

Being a construction graduate means that I had to learn to be extremely organised as there is always so much going on and to remember. I have learnt how to prioritise and problem solve and to always have the bigger picture and the business in mind.

## **Have there been any challenges along the way, and how have you been supported to overcome them?**

I am constantly learning new things on site, processes and how to deal with problems that arise. Naturally, I have made mistakes as it is my first year in the job but my more experienced colleagues are always there to advise and help find solutions so I feel very supported in my role as a graduate.

## **How do you see this experience shaping your future career or ambitions?**

I have been lucky enough to work under some brilliant and inspiring project managers and directors who have supported me in my new role. I hope to one day become a project director who is admired and respected to the same degree.

# JACK MURPHY APPRENTICE SITE MANAGER

JOINED  
SEPTEMBER 2025



## **What opportunities has this programme opened up for you that you might not have had otherwise?**

It has allowed me to go to university to gain my level 4 qualifications while also being in a work environment. I get to learn on the job whilst also being able to gain university experience. It allows me to network with people from other companies and gain a better insight into my career and what's to come.

## **Can you tell us a bit about your background and what led you to apply for this apprenticeship/graduate role?**

I've always been into construction, at the age of 18 I joined a team of plumbers on a Berkeley site in Reading as a plumber's mate, I gained invaluable skills and this got me into the construction industry. After a year I was having doubts if this was the correct environment for me as I enjoyed construction I felt that I would suit a more management type of role so the site supervisor apprenticeship stood out to me, especially with a company like Berkeley having already worked on one of their sites I knew how well they were run.

## **What skills or experiences have you gained so far that you're most proud of?**

I have gained management skills and experience in a demanding environment which moves at a very fast pace. I have gained much more confidence when speaking to the trades on site. For example, if I need something doing, I feel comfortable talking directly to a supervisor and telling them what I need, whereas at the start of my apprenticeship I felt as they wouldn't listen as I was new to the role.

## **Have there been any challenges along the way, and how have you been supported to overcome them?**

Yes, there has been challenges along the way but the team around me are very helpful and have explained everything that I have questions about in detail to give me a much better understanding of things. For example, when I have been given the role of dealing with construction snagging, James has helped me through the sequence of how he does it and it really helped me out.

## **How do you see this experience shaping your future career or ambitions?**

This experience is going to give me lots of knowledge and skills that I can use throughout my whole career and the ambitions I have of progressing to becoming a project director. It has already taught me very important lessons and already helped me grow as a person in just a matter of months. So I am excited to see what's left to come.



# JAMIE FROM LANDMARK BRICKWORK

**“In terms of how I got into my current role, I attended Ealing Council’s career fair at Greenford Hall in May 2023 where the team promoted careers in construction and the vacancies available at Berkeley, The Green Quarter.**

From my experience at Landmark, it’s clear that the quality of what we build really does come down to the people on site.

The apprenticeship programme gives us the chance to learn properly — not just how to lay bricks, but how to do the job safely, to a high standard, and with pride in what we’re building.

Knowing the work you’re doing will still be standing years from now definitely makes you want to get it right.”

# CARE LEAVERS

**At The Green Quarter, we were proud to host two care leavers, Marcus and Aaron, for a two-week placement designed to build confidence, skills, and workplace experience.**

From the outset, both individuals approached the opportunity with determination and a strong work ethic.

Over the course of the programme, they consistently demonstrated dedication and a willingness to learn, making a lasting impression on everyone they worked with.

Their time at The Green Quarter not only highlighted their potential but also reinforced the value of providing supportive, real-world opportunities for young people with caring responsibilities.

As a result of their hard work and progress, we were honoured to be invited to Ealing Council to celebrate their achievements alongside other programme participants.

The event marked an important moment of recognition, with Ealing Council’s Chief Executive, Tony Clements, acknowledging the positive impact of partnerships like this in supporting care leavers to take meaningful steps toward employment.

It was a privilege to play a role in Marcus and Aaron’s journey. Celebrating their success was not just a reflection of what they accomplished during those two weeks, but a reminder of what can be achieved when opportunity meets determination. We wish them every success as they continue to build their futures.



# RIZWAN IRSHAD CLEAN SLATE DRY CLEANING

AND CLEAN SLATE  
CONSTRUCTION  
SERVICES

## **Can you tell us a bit about yourself and your journey to becoming both a resident and business owner at Parkside Yards?**

My name is Rizwan, and I'm the owner of Clean Slate Dry Cleaning and Clean Slate Construction Services. My journey has been built on hard work, resilience and a desire to create something meaningful for my family and the wider community.

Over time, I've built experience across different sectors, and Parkside Yards felt like a natural next step, allowing me to combine my professional ambitions with a strong sense of community.

## **What drew you to this development as a place to live and work?**

It was the vision behind it. It didn't feel like just another development, but somewhere people could grow and connect.

The ability to live and work in the same place brings balance, reduces travel, and allows more focus on both family and business.

## **Can you describe your businesses and what inspired you to start them?**

Clean Slate Dry Cleaning focuses on high-quality garment care with strong customer service, while Clean Slate Construction Services supports contractors with professional cleaning solutions.

I was inspired by the idea of building something of my own that could create opportunities for others, not just profit.

## **How has being based within the development influenced your business?**

It's had a very positive impact. The environment encourages natural networking and relationship-building.

Day-to-day, it's made life more efficient, helping me manage my time and stay present both professionally and personally.

## **Do you feel living and working in one place has created new opportunities?**

Definitely. Networking becomes more organic, and everyday conversations often lead to ideas or partnerships. It also allows greater flexibility and a healthier work-life balance.

## **What would you say to someone considering Parkside Yards?**

It offers more than a place to live or work. It's a community built around opportunity, growth and support.



**CANDIDA MOSOMA  
AUTHOR,  
PERFORMER  
& FOUNDER  
OF MBILU TALES**

**Can you tell us a bit about yourself and your journey to becoming a resident at The Green Quarter?**

I am a musical theatre performer currently working in the West End, as well as the founder of Mbilu Tales, an Afrocentric children's storytelling brand. I discovered The Green Quarter while searching for a new home after my previous lease ended. I wanted somewhere in London that felt safe, calm and modern. From the moment I moved in, the process was seamless, and I quickly felt at home. I'm now in my second year, and it has been a wonderful experience.

**What drew you to this development as a place to live?**

It was the balance. The Green Quarter feels peaceful and community-oriented while still being connected to London. The outdoor spaces stood out to me, from the orchard and riverside walkways to the amphitheatre and playgrounds. It feels modern without being overwhelming, offering a sense of calm after long days in the city.

**Can you describe your business and what inspired you to start it?**

Mbilu Tales, meaning "Stories from the Heart," is an Afrocentric children's storytelling brand celebrating imagination, courage, family and community. My first book, Khanyi and the Kite, follows a young girl and her dog on an adventure, exploring hope, courage and the philosophy of ubuntu. Creating Mbilu Tales felt like a natural extension of my work as a performer, giving me the chance to tell stories rooted in culture and connection.

**How has living here influenced your work?**

The peaceful environment has been incredibly supportive creatively. Spaces like the orchard and riverside have helped shape my ideas, offering room to reflect and create.

**Do you feel living here has created new opportunities?**

Absolutely. Support from The Green Quarter team and OPEN Southall has helped bring my upcoming storytelling and kite-flying event to life, bringing the community together.

**What would you say to someone considering The Green Quarter?**

It's a modern, community-focused oasis in London, offering a rare balance of calm, creativity and connection.

# SOUTHALL COFFEE HOUSE



As part of our commitment to supporting a diverse and inclusive local workforce, Southall Coffee House, located within the development, was pleased to welcome students with Special Educational Needs (SEN) from West London College – Southall Community College for work experience placements.

This initiative provided students with a supportive, real world environment in which to build confidence, develop practical skills, and gain valuable insight into the workplace.

Creating opportunities like this is essential in helping to break down barriers to employment, ensuring that young people of all abilities have access to meaningful experiences that can support their future aspirations

It also reinforces the role developments like ours can play in fostering inclusive growth within the local community, while empowering individuals to reach their full potential.



## INWARD INVESTMENT SUPPORTING START-UPS AND LOCAL BUSINESSES

**We're also committed to creating local enterprise opportunities via start up support, mentoring and networking via IKB and Ealing Council and through Parkside Yards.**

The Green Quarter doesn't just support local businesses through its retail and commercial spaces, it also collaborates with partners to bring new value to the development.

Collaborating with IKBEventWorks, itself a local business, The Green Quarter has worked to bring new events and opportunities hosted at the development to enhance the Southall Business landscape, developing Southall's own business ecosystem.



# IKBEVENTWORKS HIGHLIGHTS 2025/26

**“We’ve been working closely with The Green Quarter to deliver community-focused events that bring people and businesses together. Their support has included providing space, resources, and a collaborative environment that enables us to host high-quality events for the local community.”**

“We’ve delivered a range of events including business networking sessions, community engagement events, and themed celebrations. To date, we’ve hosted multiple events throughout the year, consistently bringing together local businesses and residents.

One of the standout events has been our International Women’s Day celebration, which brought together inspiring women from the community to connect, share experiences, and support one another. Events like these are particularly impactful because they create a strong sense of empowerment and community.

The Green Quarter has played a key role by offering a welcoming and professional space where businesses feel comfortable connecting. Their support has made it easier to attract diverse attendees and create an environment where meaningful relationships can develop.

Our events have seen strong attendance and engagement from local businesses and community members.

Feedback has been overwhelmingly positive, with many attendees highlighting the value of networking opportunities, collaboration, and the supportive atmosphere. We’ve also seen ongoing connections and partnerships form as a direct result of these events.”



# PARKSIDE YARDS INCUBATOR SPACE FOR FUTURE BUSINESSES & ARTISTS



**Parkside Yards is a vibrant public hub, featuring OPEN Southall, a creative and community space with a ceramics studio and community centre, and a cafe. It provides local businesses and artists with incubator space to grow.**

In 2025/26, Parkside Yards continued to support local enterprise, welcoming new businesses including Clean Slate Dry Cleaning.



## THE BRILLIANT GASTRO OPENED AT THE GREEN QUARTER

**The new venture marks a fresh chapter for the Anand family. It follows the closure of their iconic Brilliant Restaurant earlier last year which served the community for 50 years.**

The popularity of Brilliant Restaurant saw a loyal following from not just locals but also people across the world and even His Majesty King Charles III naming it one of his favourite places for a curry.

The new Parkside Yards location is also the home for Dipna's cookery school, giving food fans a chance to learn directly from the renowned chef.

The opening of a renowned local business at The Green Quarter has

generated job and community benefits for the Southall community.

Marcus Blake said, "Dipna and the Anand family have such a rich history here in Southall, and the Brilliant brand is truly iconic. It's wonderful to see how they are evolving, to bring a fresh and exciting dining experience in the form of Brilliant Gastro. I have a feeling this is going to be very popular spot for the existing Brilliant fan base, our residents and community alike."

# OUR CHARITY PARTNERS

We are proud to partner with charities that deliver meaningful social, environmental, and community impact.

These partnerships enable us to support those most in need while strengthening the communities in which we work.

The Berkeley Foundation, Berkely's independent charitable foundation, shares our vision that young people and their communities should have the tools and resources to thrive and be a force for positive change.

Through long-term, trust-based relationships with expert frontline organisations, it invests in programmes that create lasting impact.

At The Green Quarter, we have contributed more than 206 volunteering hours this year and raised over £179,000 for Mencap since 2024.



# EALING MENCAP

“We are a charity 60 years old this year, supporting children’s young people and adults to live as independent lives as possible, living with learning disabilities in Ealing.”



# HONEYPOT

“For over 30 years now we have been looking after young carers ages five to 12, who are looking after someone, it could be a poorly parent or a sibling with complex needs we give them the opportunity to come to one of our respite houses, to relax have fun and make like minded friends.”



# SPEAR

“We support people across the southwest of London to find homes to call their own, we work with the homeless community either sleeping rough or on the path to be homeless to find a path back to independence and housing however that suits them.”



# CHARITY GOLF DAY

**This event was about much more than golf.**

Our purpose was to bring together partners and stakeholders to raise funds for charity partners, with every swing, raffle ticket and sponsorship making a difference to those to who need



## EALING MENCAP 60TH ANNIVERSARY FASHION SHOW

**We were proud to support Ealing Mencap's 60th anniversary fashion show at Parkside Yards, a powerful celebration of confidence and community.**

The event was supported by an enthusiastic audience and special guests including the Mayor of Ealing, Sarah Gordy MBE, Daniel Wakeford, and local MPs.

Participants described the experience as empowering and transformative, with many highlighting the confidence gained from taking part.

# EALING HALF MARATHON

The 12th Annual Ealing Half Marathon took place on 28 September 2025, with participants from The Green Quarter, Southall FC and the local community raising over £2,000 (with match funding) for Ealing Mencap.

This collaboration highlighted the power of community partnerships in supporting local causes through health and wellbeing initiatives.



## HONEYPOT CHILDREN'S CHARITY PANCAKE DAY

To celebrate Pancake Day and Honeypot's 30th anniversary, we hosted a special event at Parkside Yards in partnership with Southall Coffee House.

Twenty young carers took part in a hands-on workshop, decorating pancakes and enjoying outdoor activities at the Tree Nursery

The celebration included a pancake-flipping competition, creating joyful and memorable experiences for children who provide care for family members.



# SPEAR CHRISTMAS VOLUNTEERING

**We supported SPEAR's annual Christmas initiative, where volunteers helped wrap over 1,000 donated gifts for more than 300 individuals experiencing homelessness or housing insecurity across Southwest London and Tower Hamlets.**

This initiative highlights the importance of volunteering in delivering practical support and spreading seasonal goodwill to those most in need.

As our current charity partnerships approach renewal in April 2026, we are taking the opportunity to reflect on the impact achieved so far and look ahead to future collaborations.

Alongside welcoming continued interest from existing partners, we are also exploring opportunities to connect with new local organisations whose work supports our shared community priorities.

Through this process, we will continue building strong, meaningful partnerships that make a positive and lasting difference locally.





# WEST LONDON CHAMBER BUSINESS AWARDS

The Green Quarter team won the award for Best Green Business at the West London Chamber Business Awards, a recognition that celebrated its commitment to sustainability and positive environmental impact.



# WEST LONDON BUSINESS AWARDS

The Green Quarter team were announced as the winner of the Socially Responsible Corporate of the Year award 2026 at this year's West London Business Awards.

# OUR STAKEHOLDER PARTNERS



# THE GREEN QUARTER

WEST LONDON



[THEGREENQUARTERCOMMUNITY.CO.UK](http://THEGREENQUARTERCOMMUNITY.CO.UK)

**Berkeley**  
Designed for life